

Tannhauser Environment for 2 tubas

Thomas
Smetryns

1

Moderato

Handwritten musical notation for the first system of 'Tannhauser Environment' for 2 tubas. The system consists of two staves, numbered 1 and 2. Both staves are in the bass clef with a 9/8 time signature. Staff 1 begins with a half note G2, followed by a half note F2, and then a half note E2. A slur covers the next three notes: D2, C2, and B1. Staff 2 begins with a half note G2, followed by a half note F2, and then a half note E2. A slur covers the next three notes: D2, C2, and B1. The system concludes with a double bar line. Dynamics include 'pp' (pianissimo) and 'pp' (pianissimo). There are also 'V' (breath mark) and 'Δ' (triangle) symbols.

langsamer und leise

Handwritten musical notation for the second system of 'Tannhauser Environment' for 2 tubas. The system consists of two staves, numbered 1 and 2. Both staves are in the bass clef with a 9/8 time signature. Staff 1 begins with a half note G2, followed by a half note F2, and then a half note E2. A slur covers the next three notes: D2, C2, and B1. Staff 2 begins with a half note G2, followed by a half note F2, and then a half note E2. A slur covers the next three notes: D2, C2, and B1. The system concludes with a double bar line. Dynamics include 'pp' (pianissimo) and 'pp' (pianissimo). There are also 'V' (breath mark) and 'Δ' (triangle) symbols.

Handwritten musical notation for the third system of 'Tannhauser Environment' for 2 tubas. The system consists of two staves, numbered 1 and 2. Both staves are in the bass clef with a 9/8 time signature. Staff 1 begins with a half note G2, followed by a half note F2, and then a half note E2. A slur covers the next three notes: D2, C2, and B1. Staff 2 begins with a half note G2, followed by a half note F2, and then a half note E2. A slur covers the next three notes: D2, C2, and B1. The system concludes with a double bar line. Dynamics include 'ppp' (pianississimo) and 'ppp' (pianississimo). There are also 'V' (breath mark) and 'Δ' (triangle) symbols.

Moderato

Handwritten musical notation for the first system, marked "Moderato". It consists of two staves. The first staff (treble clef) contains a series of eighth notes with accidentals (flats and naturals) and a final measure with a fermata. The second staff (bass clef) contains a single eighth note followed by a fermata. Dynamic markings include *p* (piano) and *f* (forte). There are also triangular and V-shaped symbols above the notes.

Handwritten musical notation for the second system. The first staff (treble clef) contains a series of eighth notes with accidentals and a final measure with a fermata. The second staff (bass clef) contains a single eighth note followed by a fermata. Dynamic markings include *f* (forte). There are also triangular and V-shaped symbols above the notes.

piu lento

Handwritten musical notation for the third system, marked "*piu lento*". It consists of two staves. The first staff (treble clef) contains a series of eighth notes with accidentals and a final measure with a fermata. The second staff (bass clef) contains a series of eighth notes with accidentals and a final measure with a fermata. Dynamic markings include *p* (piano), *pp* (pianissimo), and *mp* (mezzo-piano). There are also V-shaped and square symbols above the notes.

Allegro

Handwritten musical score for two staves, measures 1-3, in 9/8 time. The tempo is marked "Allegro".

Measure 1:

- Staff 1: Starts with a V-shaped note (half note), followed by a quarter note (Bb), a quarter note (A), and a quarter note (G). A slur covers the last three notes. A triangle symbol (Δ) is placed above the staff.
- Staff 2: Starts with a V-shaped note (half note), followed by a quarter note (Bb), a quarter note (A), and a quarter note (G). A slur covers the last three notes. A triangle symbol (Δ) is placed above the staff.

Measure 2:


- Staff 1: Starts with a V-shaped note (half note), followed by a quarter note (Bb), a quarter note (A), and a quarter note (G). A slur covers the last three notes. A triangle symbol (Δ) is placed above the staff.
- Staff 2: Starts with a V-shaped note (half note), followed by a quarter note (Bb), a quarter note (A), and a quarter note (G). A slur covers the last three notes. A triangle symbol (Δ) is placed above the staff.

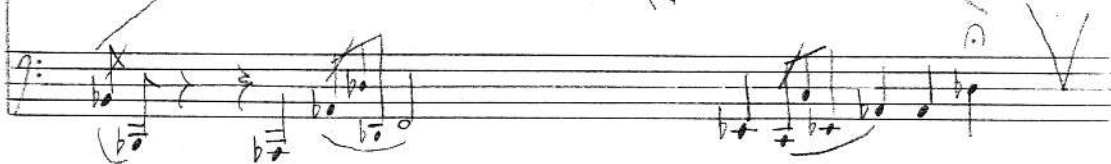
Measure 3:


- Staff 1: Starts with a V-shaped note (half note), followed by a quarter note (Bb), a quarter note (A), and a quarter note (G). A slur covers the last three notes. A triangle symbol (Δ) is placed above the staff.
- Staff 2: Starts with a V-shaped note (half note), followed by a quarter note (Bb), a quarter note (A), and a quarter note (G). A slur covers the last three notes. A triangle symbol (Δ) is placed above the staff.

The score includes dynamic markings: *mp* (mezzo-piano) and *pp* (pianissimo). The notation includes various note values, slurs, and accidentals (Bb, A, G).

$\text{♩} = 69$


1 

2 

1 

2 

1 

2 



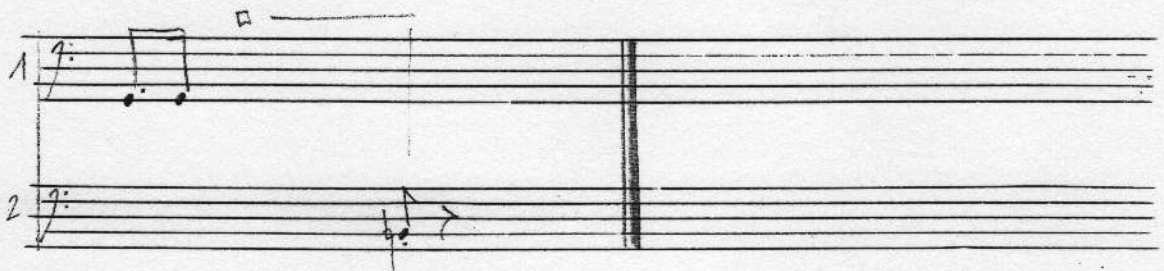
Schneller

Handwritten musical notation for two staves (1 and 2). Staff 1 contains a series of eighth notes with sharp signs, followed by a rest and a final note. Staff 2 contains a series of eighth notes with sharp signs, followed by a rest and a final note. Both staves end with a large 'V' mark.

Handwritten musical notation for two staves (1 and 2). Staff 1 contains a series of eighth notes with sharp signs, followed by a rest and a final note. Staff 2 contains a series of eighth notes with sharp signs, followed by a rest and a final note. Both staves end with a large 'V' mark.

Handwritten musical notation for two staves (1 and 2). Staff 1 contains a series of eighth notes with sharp signs, followed by a rest and a final note. Staff 2 contains a series of eighth notes with sharp signs, followed by a rest and a final note. Both staves end with a large 'V' mark.

Moderato



Handwritten musical notation for the first system, consisting of two staves. The tempo is marked $\text{♩} = 72$. The first staff begins with a treble clef and a key signature of one sharp (F#). A large slur covers the first six measures, with a *mf* dynamic marking. The second staff begins with a bass clef and a key signature of one sharp (F#), also marked *mf*. Both staves end with a double bar line and a repeat sign.

Handwritten musical notation for the second system, consisting of two staves. The first staff continues the melody from the first system, featuring a triplet of eighth notes in the fourth measure. The second staff provides a bass line, including a triplet of eighth notes in the fourth measure. Both staves end with a double bar line and a repeat sign.

Handwritten musical notation for the third system, consisting of two staves. The first staff continues the melody, ending with a double bar line. The second staff continues the bass line, also ending with a double bar line.

